

## Flowshield LXP (1.5 mm)

A self-smoothing, solvent free, flexible coloured polyurethane-based floor coating.



### Seamless:

Delivers a seamless finish, except for underlying slab joints.



### Chemical Resistant:

Excellent resistance to cleaning agents, sugars and acids.



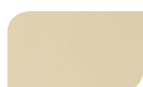
### Easy to Clean:

Seamless installation ensures dirt and dust are easily cleaned away.



### Low Odour:

Solvent free and exhibits low odour during application.



Beige 326



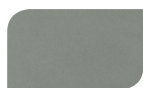
Dark Grey 281



Forest Green  
754



Goosewing  
Grey 222



Mid Grey 280



Tile Red 637

The applied colours may differ from the examples shown.  
For a full colour chart and samples, contact your local Flowcrete office.

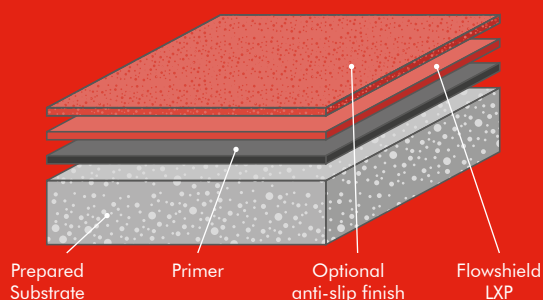
## Technical Profile\*

REACTION TO FIRE	
EN 13501-1	B <sub>fl</sub> -s1
IMPACT RESISTANCE	
EN ISO 6272	13 Nm
TEMPERATURE RESISTANCE	
Tolerant of sustained temperatures up to 60°C	
WEAR RESISTANCE <small>Taber Abrader, H22 wheels, 1000 cycles, 1kg load</small>	
EN ISO 5470-1	Weight loss < 100 mg
BOND STRENGTH	
EN 1542	2.0 N/mm <sup>2</sup>
ELONGATION AT BREAK	
BS 6319	60%
CAPILLARY ABSORPTION & WATER PERMEABILITY	
EN 1062-3	0.001 kg/m <sup>2</sup> × h <sup>0.5</sup>
TEAR STRENGTH	
BS 6319	11 MPa
SLIP RESISTANCE** <small>(in accordance with HSE and UKSRG guidelines)</small>	
EN 13036-4 / BS 7976-2 <small>(typical values for 4-S rubber slider)</small>	Dry >40 low slip potential
SURFACE HARDNESS	
ASTM D2240	65 (Shore D)
TOXICITY	
Taint free to sensitive foodstuffs (when cured)	
BS 8204-6 / FeRFA	
Type 5	

SPEED OF CURE	10 °C	20 °C	30 °C
Light traffic	36 hrs	24 hrs	12 hrs
Full traffic	72 hrs	48 hrs	24 hrs
Full chemical cure	12 days	7 days	7 days

\*These figures are typical properties achieved in laboratory tests at 20°C and at 50% Relative Humidity.

\*\*The slipperiness of flooring materials can change significantly, due to the installation process, after short periods of use, due to inappropriate maintenance, longer-term wear and/or surface contaminants (wet or dry). Textured systems are recommended to meet slip resistance value requirements for wet conditions and/or surface contaminants (wet or dry). Please contact our Technical Department for further details and specifications.



## Model Specification

<b>Product</b>	Flowshield LXP
----------------	----------------

Preparatory work and application in accordance with manufacturer's instructions.

## Products Included In This System

<b>Primer</b>	Concrete: Deckshield SF Primer @ 0.3 kg/m <sup>2</sup> (Porous substrate may require 2 coats) Steel: Peran Primer W @ 0.25 kg/m <sup>2</sup> Wood: Deckshield SF Primer @ 0.3 kg/m <sup>2</sup> Asphalt: Deckshield SF Primer @ 0.3 kg/m <sup>2</sup> (Porous substrate may require 2 coats)
<b>Coating</b>	Flowshield LXP (density 1.5 kg/l) @ 2.3 kg/m <sup>2</sup> for 1.5 mm

For slip resistant dressings, please consult our Technical Advisors.

Detailed application instructions are available upon request.

## Substrate Requirements

Concrete or screed substrate should be a minimum of 25 N/mm<sup>2</sup>, free from laitance, dust and other contamination. The substrate should be dry to 75% RH as per BS8203 and free from rising damp and ground water pressure. If no damp proof membrane is present Hydraseal DPM can be incorporated directly beneath the Flowshield system.

## Installation Service

The installation should be carried out by a Flowcrete approved contractor with a documented quality assurance scheme. Obtain details of our approved contractors by contacting our customer service team or enquiring via our website [www.flowcrete.co.uk](http://www.flowcrete.co.uk)

## Aftercare

Clean regularly using a single or double headed rotary scrubber drier in conjunction with a mildly alkaline detergent.

Flowcrete products are guaranteed against defective materials and manufacture and are sold subject to our standard 'Terms and Conditions of Sale', copies of which can be obtained on request.

## Environmental Considerations

The finished system is assessed as non-hazardous to health and the environment. The long service life and seamless surface reduce the need for repairs, maintenance and cleaning.

Environmental and health considerations are controlled during manufacture and application of the products by Flowcrete staff and fully trained and experienced contractors.

## Note

Flowshield LXP is not colour fast and may change colour over time (exhibits a yellowing effect). Colour change depends on the UV light and heat levels present and hence the rate of change cannot be predicted. This is more noticeable in light colours and blues but does not compromise the product's flexibility or chemical resistance characteristics. We have endeavoured to adopt colours within our standard range which minimise this change.

Intensively coloured products (e.g. hair colourants, medical disinfectants etc.) and plasticizer migration (e.g. from rubber tyres) can lead to irreversible discolouration in the surface. Please contact our Technical Services Department for further advice.

Flowcrete's products are guaranteed against defective materials and manufacture and are sold subject to its standard Terms and Conditions of Sale, copies of which can be obtained on request. Any suggested practices or installation specifications for the composite floor or wall system (as opposed to individual product performance specifications) included in this communication (or any other) from Flowcrete UK Ltd constitute potential options only and do not constitute nor replace professional advice in such regard. Flowcrete UK Ltd recommends any customer seek independent advice from a qualified consultant prior to reaching any decision on design, installation or otherwise.

System Datasheet written for Flowcrete UK Ltd. Please consult Technical Team in your own country region for specific details. [11/12/18, 01 UK]